



Teacher Guide to *Find Your Vision*

An engaging school-wide program for secondary students designed for both virtual and socially distant classrooms

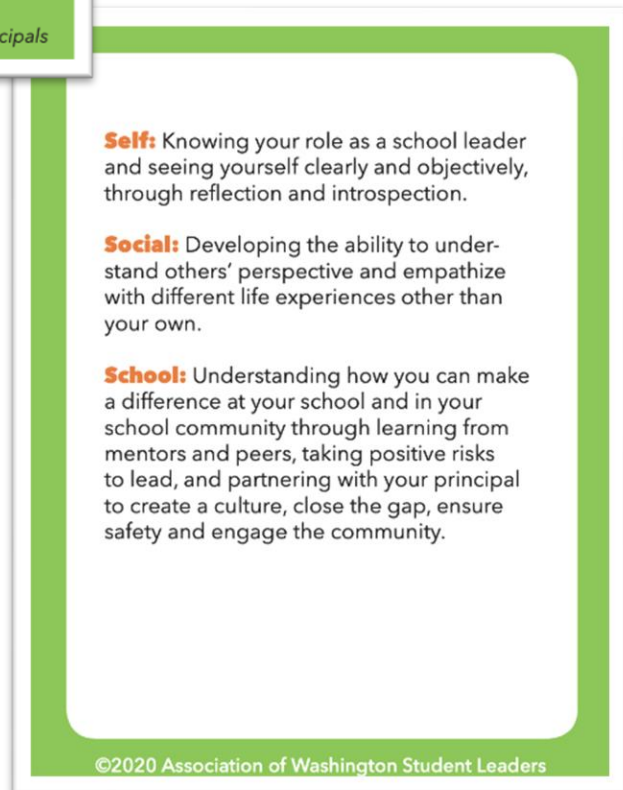
Table of Contents

Module 1 <i>Find Your Vision</i>	2-8
Slides.....	9
Module 2 <i>Connections</i>	10-15
Slides.....	16
Module 3 <i>Relationships</i>	17-24
Slides.....	25
Module 4 <i>Listening</i>	26-31
Slides.....	32
Module 5 <i>Becoming While Doing</i>	33-38
Slides.....	39
Module 6 <i>Teamwork</i>	40-44
Slides.....	45
Module 7 <i>Responsibility</i>	46-49
Slides.....	50
Module 8 <i>Know Your Why</i>	51-56
Slides.....	57
Module 9 <i>Decision-Making</i>	58-62
Slides.....	63
Module 10 <i>Framing a Vision</i>	64-69
Slides.....	70



Module 1: Find Your Vision

Student Concept Cards





Summary of Module 1: **Find Your Vision**

Lesson Summary	<p>Leaders need a deep understanding of themselves; they need skills to interact with a variety of people and perspectives. They need to hold an unwavering belief that they can make a difference in their communities.</p> <p>Through artwork and writing prompts, students, explore the concept of finding a vision by looking through three lenses: self, social, and school.</p>
Social-Emotional Learning	<p>CASEL</p> <p>SELF-Awareness: The ability to assess one's strengths with a well-grounded sense of confidence, optimism, and a "growth mindset.</p> <p>WA K-12 SEL Standards and Benchmarks</p> <p>1 SELF-AWARENESS: ability to identify emotions, personal assets, areas for growth, and potential external resources and supports.</p> <p>Benchmark B: Demonstrates awareness of personal and collective identity encompassing strengths, areas for growth, aspirations, and cultural and linguistic assets.</p> <p>Benchmark C: Demonstrates self-awareness and understanding of external influences, e.g., culture, family, school, and community resources and supports.</p>
Supplies & Materials	<p>Student Supplies and Materials:</p> <ul style="list-style-type: none">• Find Your Vision concept card, text, or offered through a digital platform.• Magic Glasses Activity: pen or pencil and a piece of paper. Additionally, other art supplies can be added (paint, markers, crayons, colored pencils, art paper) <p>Teacher Supplies and Materials:</p> <ul style="list-style-type: none">• Module slides: Find Your Vision• Option: prepare three sets of Magic Glasses one for Self, Social, and School-based on your answers to the writing prompts and your original artwork



Lesson for Module 1: Find Your Vision

<p>1. The script of AWSL Concept Intro Video</p>	<p>"To find something is an action. Putting forth effort, applying creativity, and developing new understandings are all actions that help leaders Find a Vision. A 'vision' is a strong wish or idea about the future. Sometimes visions are defined by goals or a clear statement of purpose. Sometimes they are established through a feeling a person who leads hopes to create, and sometimes they are defined by an attitude a person who leads embraces in everything they do.</p> <p>However, a vision is defined; it must be personal enough and strong enough to create motivation for meaningful actions.</p> <p>In this module, we explore the process of finding a vision by looking through three lenses: self, social, and school.</p> <p>Self. Those who lead need to be rooted in a deep understanding of who they are as people. Starting with a clear understanding of yourself grounds you as a leader. Leading is difficult and challenging. When you are aware of yourself and your motivations, this knowledge will anchor you and serve as an internal foundation of support. As you continually reflect on your role as a leader, your strengths, skills, and areas of opportunity, you will grow and evolve.</p> <p>Social. Those who lead need to acquire skills and sensitivities to allow them to work with a wide variety of people and perspectives. Leading involves moving alongside people while communicating a strong purpose. Your ability to understand and work with others from different backgrounds and perspectives than your own will be crucial to your success. Research indicates that a team composed of a diverse group of people tend to be more innovative and more successful when completing tasks.</p> <p>School. Lastly, those who lead need to hold an unwavering belief that they can make a difference in their communities. You can make a difference in your school; the first step is to believe that this is true. It will be up to you to figure out what to do, why you should do it, and how to get it done. Building a relationship with your principal is an excellent place to start.</p> <p>Let's explore how understanding yourself, interacting with people from different backgrounds and perspectives, and believing that you can create positive change, are all tools to help you Find Your Vision."</p>
---	--



2. Activity:
***What Else
Could It Be?***

Activity Summary: Students brainstorm creative uses for three everyday items: a spoon, a pen, a roll of tape, and a set of keys.

Teacher Notes:

- A great way to jumpstart your brain for creative thinking is to ask it to think creatively.
- This activity sets up the metaphoric question: *Who else could you be?*
- Encourage students to generate more ideas than the previous item during their 30 seconds.

As an option for the last item, ask students first to write down or think of a creative use for the item, then start the group brainstorm. This technique usually produces more ideas.

a. Lead students through Module slides

b. Form students into pairs, trios, or small groups for a discussion

Discussion Questions for Activity: *What Else Could It Be?*

- Did you tend to think of creative uses of the item right away, or did it take you a while to get rolling on ideas?
- Which item seemed to be the easiest to think of alternative ways to use it? Why do you think this happened?
- What did you think was the most creative or unusual use of the everyday item?
- Did anyone say something that you still can't quite see or understand? Explain?
- What would you say if we changed the question from What Could it Be? to Who Can You Be? How does this shift in perspective affect your thinking?
- How is this activity a metaphor for the idea Find Your Vision that this lesson will explore?